



➔ **Product Type**
Rotary Switch

➔ **Product Series**
700-Series

The 700-Series rotary switches are AC/DC rated, 4-position, single pole switches. These switches feature a nylon actuator and shaft in a metal clad construction. They utilize a self-cleaning wiping action and silver plated contact system.

Certifications	UL CSA
Number of Poles	1 pole
Ratings	2A 250VAC 4A 125VAC 1A 125V
Dielectric Strength	1,000 V RMS (minimum)
Insulation Resistance	100 megohms (minimum)
Base Material	Steel/Zinc Plate
Actuator Style	Nylon Knob
Actuator Material	Nylon

Bushing Material
Terminal Options
Mounting Method
Mounting Hole Dimensions
Value Added

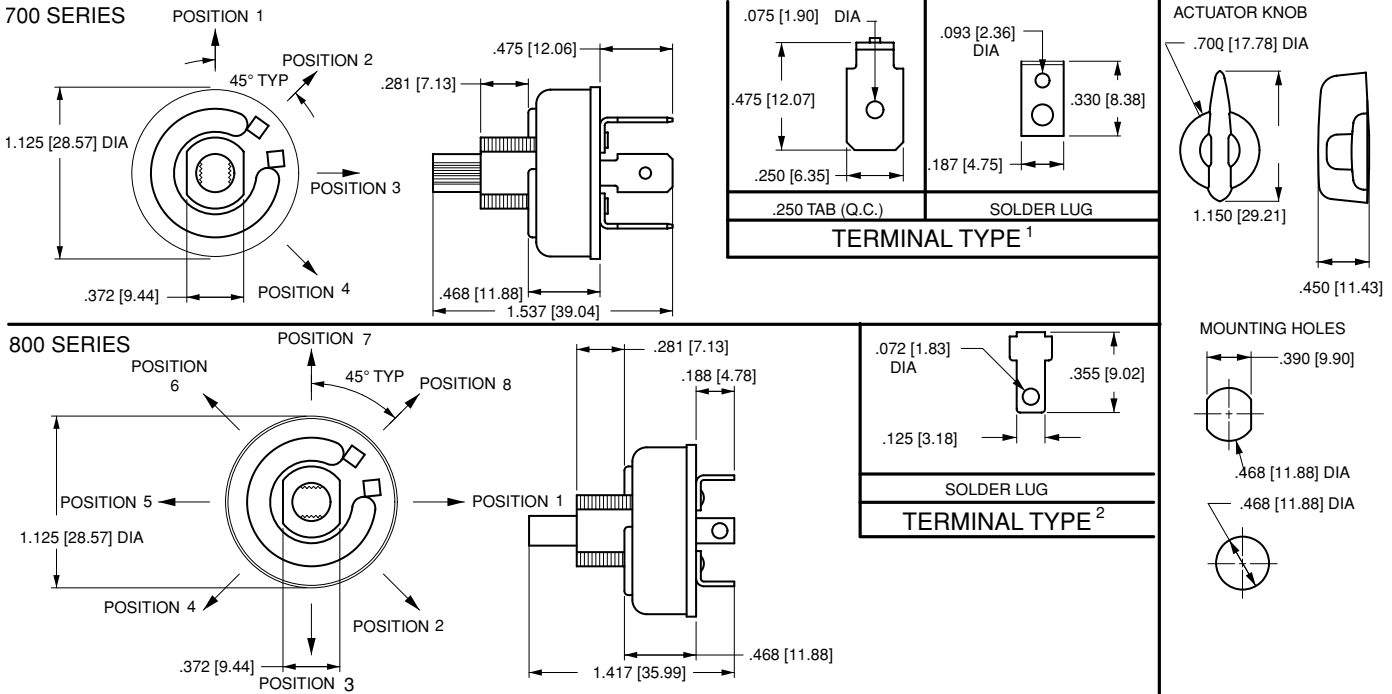
Brass/Nickel Plate
Solder Lugs
.250 QC Tabs
Bushing Mount
.468" diameter; 11.88mm diameter
Eight detent positions available
Special packaging

700/800-Series Rotary Switches



The 700 and 800-Series are single pole multi-position, general purpose rotary switches. These switches feature a nylon actuator in a metal clad construction along with a self-cleaning silver plated contact design. The 700 and 800-Series are typically used in applications requiring multi-position speed controls, such as electric fans.

Dielectric Strength:
UL, CSA 1,000V (minimum)
Insulation Resistance:
100 Megohms (minimum)
Base Material:
Steel/Zinc Plate
Actuator Material:
Brass/Nickel Plate



700-1A - **BL**

¹ Base Part Number ² Actuator Color

1 BASE PART NUMBER: SERIES/POLES/CIRCUITRY/RATING¹/TERMINATION²
2A 250VAC; 4A 125VAC; 1A 125V

Solder Lugs	.250 Tabs	Position 1	Position 2	Position 3	Position 4	
-	700-A	OFF	ON	ON	ON	
700-1	700-1A	OFF	ON	-	-	
700-2	700-2A	OFF	ON	ON	ON	repeating 8 positions
700-3	700-3A	OFF	ON	ON	OFF	
700-4	700-4A	OFF	ON	ON	-	
700-5	700-5A	OFF	ON	OFF	-	
700-6	700-6A	-	ON	OFF	ON	
700-7	700-7A	-	ON	ON	-	
700-8	700-8A	-	ON	ON	ON	
700-9	700-9A	OFF	ON	OFF	ON	

3A 250VAC; 6A 125VAC

Switch Positions	OFF Position
800-2 2 positions	800-A 1st position
800-3 3 positions	800-A2 2nd position
800-4 4 positions	800-A3 3rd position
800-5 5 positions	800-A4 4th position
800-6 6 positions	800-A5 5th position
800-7 7 positions	800-A6 6th position
800-8 8 positions	800-A7 7th position
	800-A8 8th position

2 ACTUATOR COLOR
BL black

NOTES
 1 700-2 and 700-2A feature 8 detent positions.
 2 800-Series terminal is a combination solder lug and quick connect.